



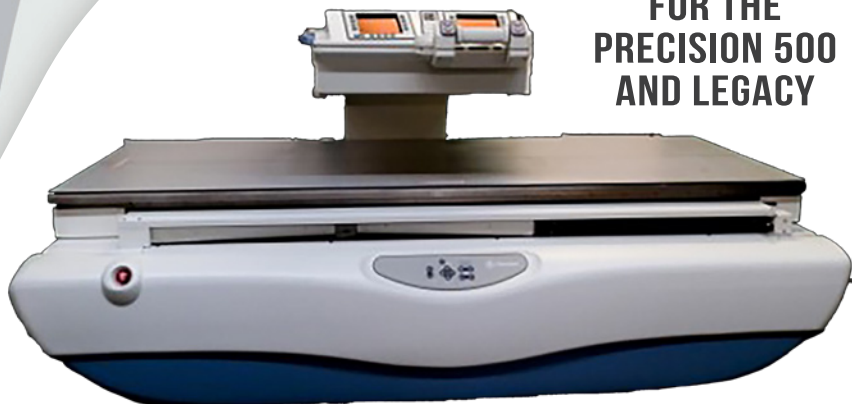
Premier Imaging Medical Systems

A RADON COMPANY

PRODUCT OVERVIEW

INSIGHT DRF ENHANCED

FOR THE
PRECISION 500
AND LEGACY



THE ONLY DIGITAL IMAGING TECHNOLOGY UPDATE DYNAMIC
FLAT PANEL FOR THE GE PRECISION 500 AND LEGACY SYSTEMS

WINDOWS 10 PLATFORM

HIPAA COMPLIANT

COMPLETE REFURBISHED
SYSTEMS OR ADD TO PROVEN
EXISTING SYSTEMS

ELIMINATES THE OEM SATURN
WINDOWS 95 COMPUTER

REPLACES THE ENTIRE IMAGING
CHAIN WITH NEW TECHNOLOGY

LOWEST DOSE AND COST
DYNAMIC DR SYSTEM AVAILABLE

TABLE SIDE OPERATORS' CONTROLS

REPLACE OTHER EOL VENDORS
WITH A COMPLETE UPDATED
REFURBISHED SYSTEM

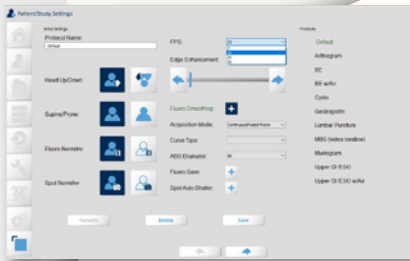


INSIGHT DRF ENHANCED UPDATE FOR THE GE PRECISION 500 AND LEGACY RF ROOMS

WINDOWS 10 PLATFORM HIPAA COMPLIANT | FDA CLEARED SYSTEM

IMAGE ACQUISITION:

- Fluoroscopy and Pulsed Fluoroscopy Acquisition at 30, 25, 15 and 7.5 Frames Per Second (FPS)
- Fluoroscopy stores up to 30 minutes of fluoroscopy per exam (For MBS and speech therapy patients)
- Support for single or dual monitor operation for “live” and “reference” touchscreen monitors
- Immediate image review with post processing features such as annotations, and region of interest
- Standard image processing features include; invert, zoom/pan, window/level, edge enhancement and variable playback speed controls for multi-frame sequences to optimize patient review
- Patient studies can be printed to any Windows printer or archived to PACS
- DICOM Send /Worklist
- MBS function can record the fluoroscopy of an entire exam
- Increase the imaging performance of your existing fluoroscopy system
- Increased Security with Windows 10
- Improved compliance, fluoroscopy time and dose monitoring built in
- Increased equipment reliability while keeping operating costs low
- 12 months parts and labor warranty
- 3 day installation to an existing system
- P500 17x17 new dynamic panel
- Legacy 12x12 new dynamic panel



INTUITIVE USER INTERFACE

EASY-TO-USE CONTROLS

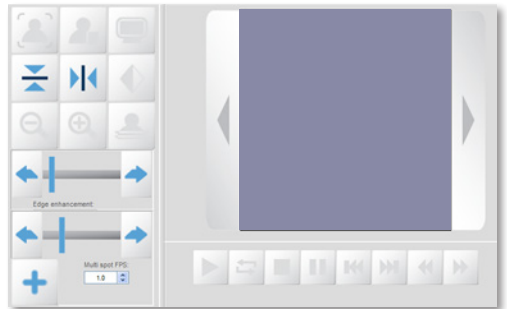


PROVEN IMAGING SYSTEM WITH OVER A DECADE OF INSTALLS UTILIZING PREMIER IMAGING'S INTERFACE IS THE PERFECT TECHNOLOGY REFRESH FOR THE INDUSTRY STANDARD GE PRECISION 500 AND LEGACY SYSTEMS

- Windows 10 Support
- Replaces the Saturn/Digital acquisition (Windows 95) computer on the Precision 500
- Spot Exposure Frame Rates
0.5, 1, 2, 3, 4, 5, 6
- Retrospective save allows for the saving of short fluoroscopy loops during any study
- Our unique Prospective save is designed for MBS studies and can save up to 30 minutes of fluoroscopy and can eliminate the video recorder
- Unique Feature Fluoroscopy Loop Editing
- Flexible and customizable image process settings to match your system and needs
- Unique Table Side Operator controls enhances workflow
- Our CSI Dynamic Detector has a quantum detection efficiency of 56% compared to end of life CCDs in the Precision 500D at 35%
- Low/Medium/High Dose Support
- Elimination of GE DRS cabinet for the Advantx and Legacy
- Dosimetry Kit displays and records exposure dose and fluoroscopy dose rate
- Display & Recording of Air Kerma, Air Kerma Rate, and Fluoroscopy Time
- Auto print to DICOM PACS of dose report per exam

INCREASED IMAGE QUALITY

LOWER DOSE THAN OEM





MINIMAL DOWNTIME FOR UPDATE
HUGE IMPROVEMENT IN IMAGE QUALITY

FLUOROSCOPY SPOT ACQUIRE
IS 0.5, 1, 2, 3, 4, 5, 6 FPS

MBS FUNCTION CAPABLE OF
RECORDING THE FLUOROSCOPY
OF THE ENTIRE EXAM



AUTO DOSE REPORTING TO PACS

EMERGENCY PATIENT

Exam protocol

Patient name	EMERGENCY PATIENT
Patient ID	
Date of birth	12/21/69
Sex	
Study description	
Institution name	Institution name
Study date	10/14/19 18:45
Total dose	14.70 [mGy]
Exposure time	0.55 [min]

EMERGENCY PATIENT