

RADON MEDICAL IMAGING

PRODUCT OVERVIEW



UMI780

**UNITED
IMAGING**



radonmedicalimaging.com

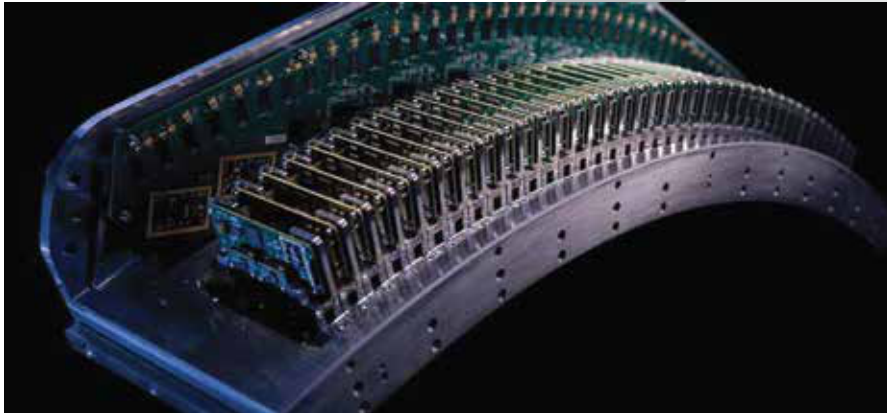
WEST VIRGINIA
866-723-6698

VIRGINIA
800-722-1991

SOUTH CAROLINA
800-722-1991



TECHNOLOGIES



160-SLICE ULTRA-FAST CT

- Built on Z-Detector technology
- 160-slice diagnostic CT
- 0.5 mm individual elements



HIGH RESOLUTION DIGITAL PET

- uEXPLORER PET technology inside
- 2.9 mm NEMA resolution
- 2.76 mm lutetium-yttrium oxyorthosilicate (LYSO) crystals



ADVANCED TECHNOLOGIES



Advanced technologies are standard on all systems

Time-of-flight, point spread function, HYPER Iterative (ROSEM), HYPER Focus, deep learning (AI) PET reconstructions, deviceless gating, metal artifact correction and more are included

Expands clinical capacity, helping you provide more exams for more patients

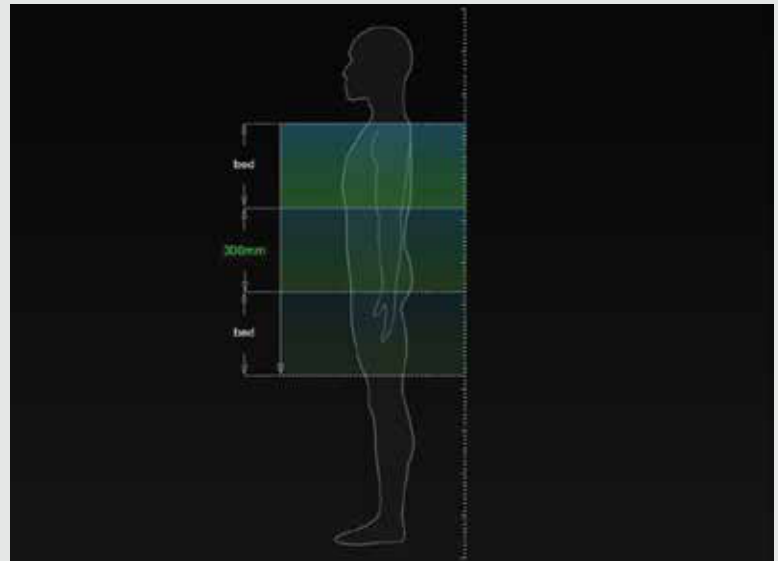
All-in Configurations™ maximize the potential for your PET and CT diagnostic examinations

30 CM AXIAL FIELD OF VIEW (FOV)



Acquires a skull base to mid-thigh scan in 3 bed positions*

30 cm axial FOV enables complete coverage of organs without image stitching



High-speed scanning increases patient throughput

High system sensitivity boosts data acquisition and enables low dose PET scans

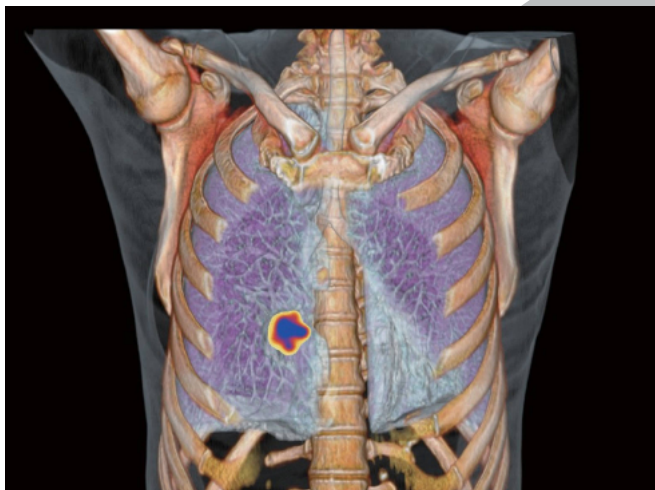


UAI HYPER DPR

AI is only as good as the data you use to train it with

Only CNN-based iterative reconstruction engine trained with uEXPLORER PET total-body data

Utilizes a pre-trained neural network to predict low noise PET images and improve image contrast



CLARITY FOR IMAGING - FULL FIELD OF VIEW RESOLUTION

Clarity

2.9 mm ultra-high NEMA PET resolution improves quantitative accuracy and small lesion detection

Sensitivity

9 cps/kBq high system sensitivity boosts data acquisition and enables low-dose PET scans

Speed

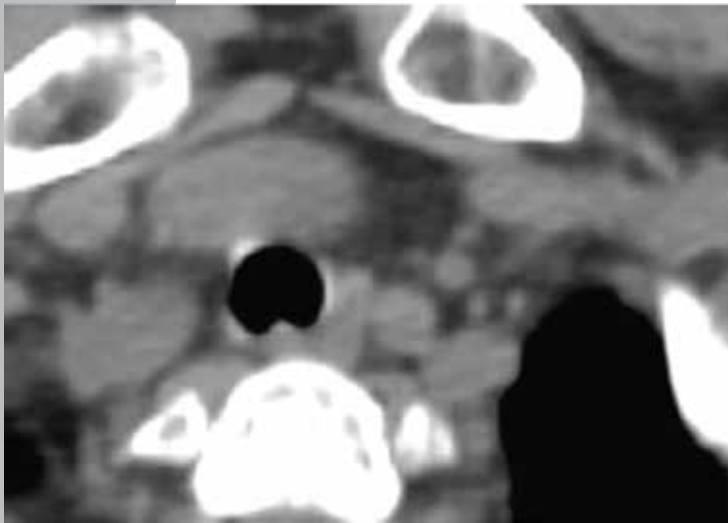
24 cm Axial FOV for faster patient scanning



UNITED IMAGING 



PRECISION.
EFFICIENT.





UMI780

**UNITED
IMAGING** 

radonmedicalimaging.com