

RADON

MEDICAL IMAGING

PRODUCT OVERVIEW

UDR596I



**UNITED
IMAGING** 



radonmedicalimaging.com

WEST VIRGINIA
866-723-6698

VIRGINIA
800-722-1991

SOUTH CAROLINA
800-722-1991



ALL-IN CONFIGURATION

- LARGE-COVERAGE, WIRELESS,
HD FLAT-PANEL DETECTOR

The 17" x 17" large HD flat-panel detector is acclimated to a wide range of imaging and positioning requirements. The cesium iodide (CsI) based detector is built for durability and offers high detective quantum efficiency (DQE) and spatial resolution.



- AUTOMATIC LIGHT
FIELD COLLIMATOR

The automatic light field collimator provides rapid and precise irradiation field setup before each exposure, reducing unnecessary radiation dose to the patient.





AUTOMATIC STITCHING TECHNOLOGY

Automatic stitching technology offers high-quality panoramic imaging to help improve clinical diagnosis, especially in orthopedic imaging. Automatic measurement technology is a unique feature capable of assisting in the preoperative and postoperative evaluation of the corresponding orthopedic surgical procedures.



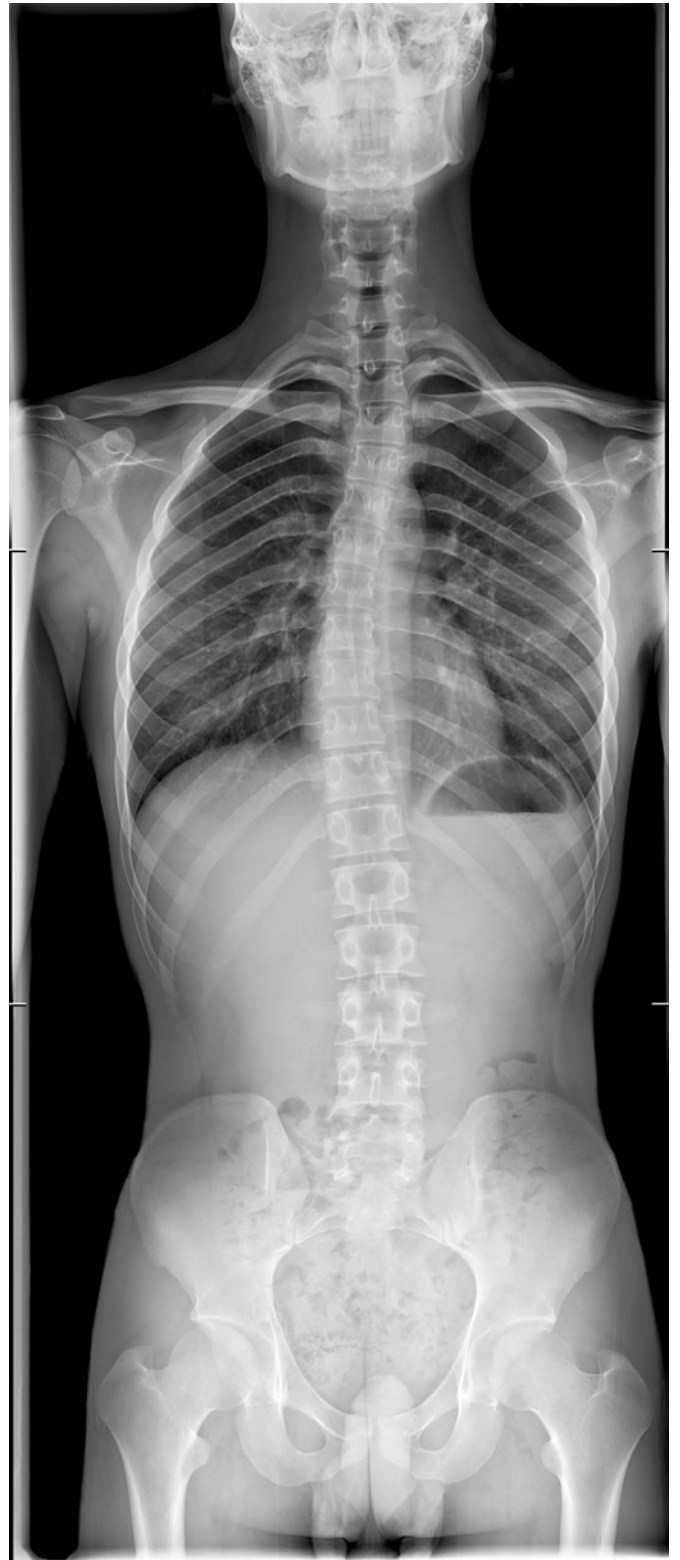
AUTOMATIC TUBE-DETECTOR TRACKING

Automatic tube-detector tracking synchronizes movement between the X-ray tube and the flat-panel detector, which significantly reduces positioning time. Built-in safeguard functionality ensures operator and patient safety.





EXCELLENT IMAGE QUALITY





PERFORMANCE. ATTAINABLE.



**UNITED
IMAGING** 

UDR596I