

# RADON

## MEDICAL IMAGING



United Imaging - uDR 380i Pro

[radonmedicalimaging.com](http://radonmedicalimaging.com)

We focus on people, innovative products,

# uDR<sup>®</sup> 380i Pro

## Power at the Point of Care

The **uDR 380i Pro** is a high-performing and agile mobile X-ray system with an ultra-narrow body and lightweight design. With its motorized power steering and zero-turn radius, the uDR 380i Pro is easy to maneuver and fits in tight spaces. The system touts a long-lasting battery with up to 800 exposures per charge. The **uVision Remote Console** enables a smart workflow with real-time patient monitoring, voice guidance, remote exposure control and more, redefining the workflow for point of care imaging. The system is clearly powerful with a 50 kW high voltage generator to image all types of exams with the image quality you need.

### uDR 380i Pro Behind the Covers

- 50 kW high voltage generator
- 14" x 17" wireless flat panel detector
- Smart workflow with uVision Remote Console
- Ultra-compact and lightweight design
- Fast moving system with a 13° climbing radius
- Long lasting battery with up to 800 exposures per charge



### All-In Configurations™

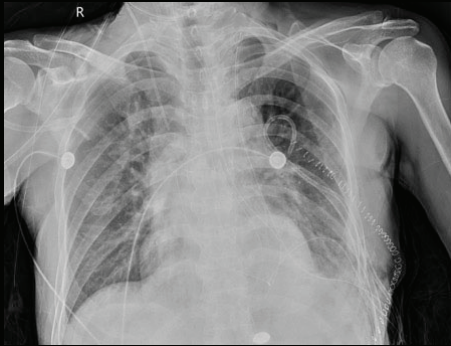
Included features and software allow for a wide variety of exams, providing you with added value at the time of purchase.

- 50 kW high voltage generator
- uVision Remote Console
- Virtual grid technology
- Remote exposure switch
- Copper filters
- Storage areas

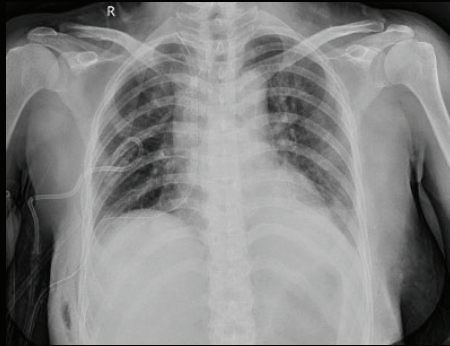
### Software Upgrades for Life™

The inclusion of new software upgrades throughout the product lifecycle delivers both performance enhancements and new functionality to always keep your investment current.

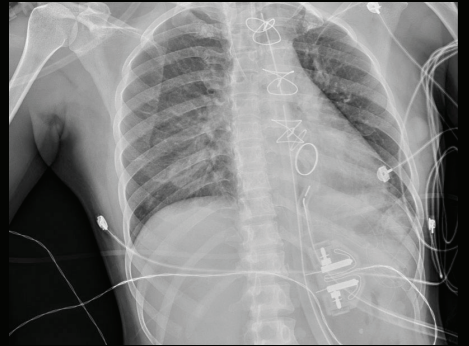
## Clinical Images



Chest AP



Chest AP



Chest AP



Elbow AP



Knee AP



Skull AP

All Images Courtesy of United Imaging

© 2023 United Imaging Healthcare Co., Ltd. All rights reserved.  
9370 Kirby Drive, Houston, Texas 77054

[www.united-imaging.com](http://www.united-imaging.com)

IC-US-230316-1005

Scan QR code for  
more information

