

RADON

MEDICAL IMAGING

PRODUCT OVERVIEW



UOMEGA

**UNITED
IMAGING**



radonmedicalimaging.com

WEST VIRGINIA
866-723-6698

VIRGINIA
800-722-1991

SOUTH CAROLINA
800-722-1991



GREATER ACCESS FOR YOUR COMMUNITY

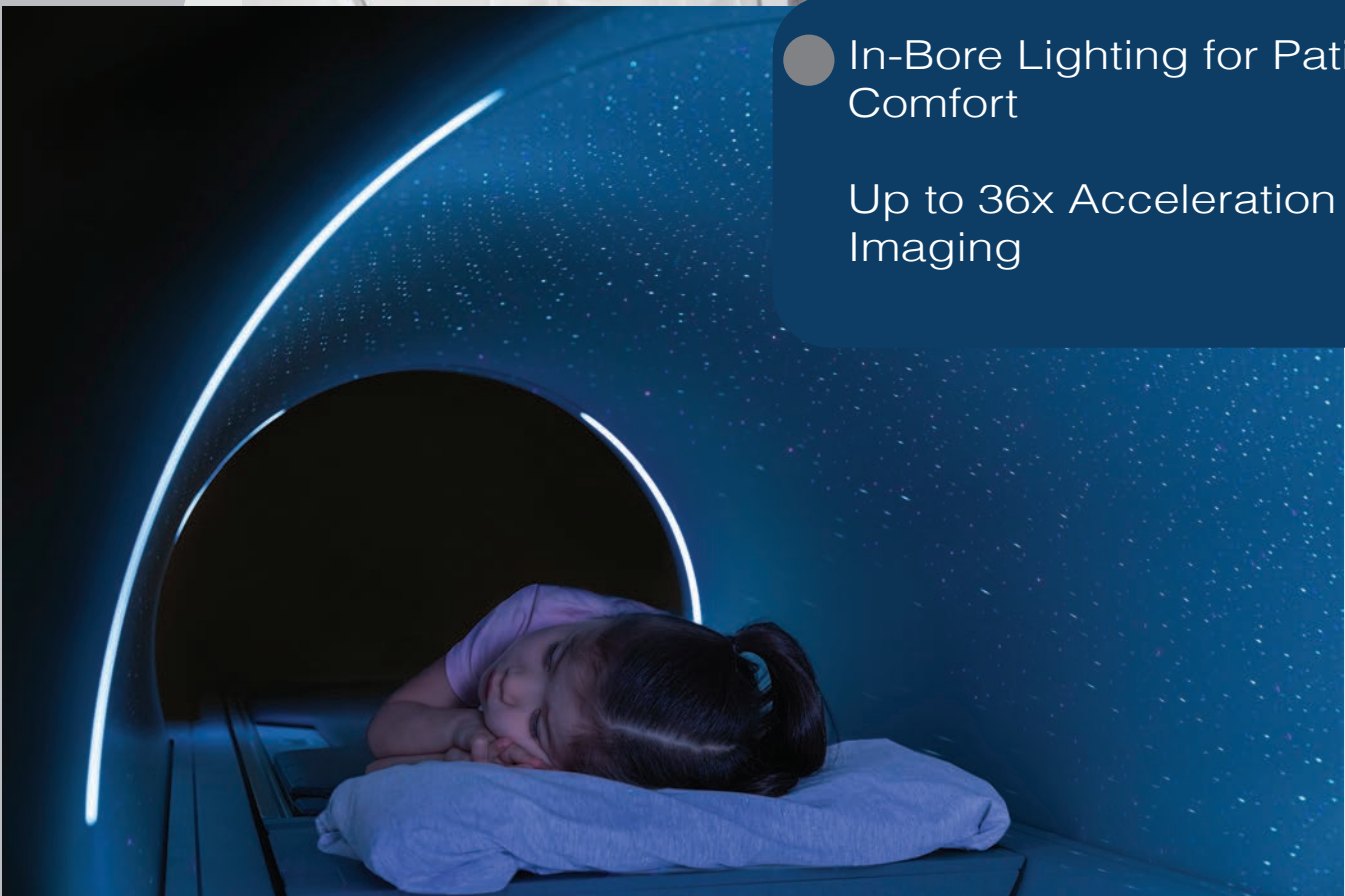
● Ultra-Wide 75 cm
Bore

310 kgs. (683 lbs.)
Table Weight Capacity



● In-Bore Lighting for Patient
Comfort

Up to 36x Acceleration for Fast
Imaging





TECHNOLOGY

uMR OMEGA™ is thoughtfully designed to expand current access to MRI by combining many breakthrough innovations that provide additional diagnostic information throughout the expansive 60 x 60 x 50 cm field of view. Its technology includes high homogeneity, a powerful GPA, and the ultra-wide, 75 cm bore.



UCS 2.0 PLATFORM

The uCS Platform enables efficient application of compressed sensing with a routine clinical workflow for 2D, 3D, and 4D MR exams. The next-generation uCS imaging technology pushes clinical boundaries of isotropic resolution and dynamic imaging speed.

UCS ^{2.0} Platform
Speed | Resolution | Whole Body | 2D/3D/4D Sequences

uCS combines the strength of conventional acceleration technologies and innovative compressed sensing, breaking through the limits of both speed and resolution with a maximum acceleration factor of 36x and high, sub-millimeter iso-

The uCS Processing Engine is a high-performance computing technology that includes memory, data network, and premier CPU. The intelligent reconstruction algorithm complements the outstanding computational power, resulting in ultra-fast reconstruction.

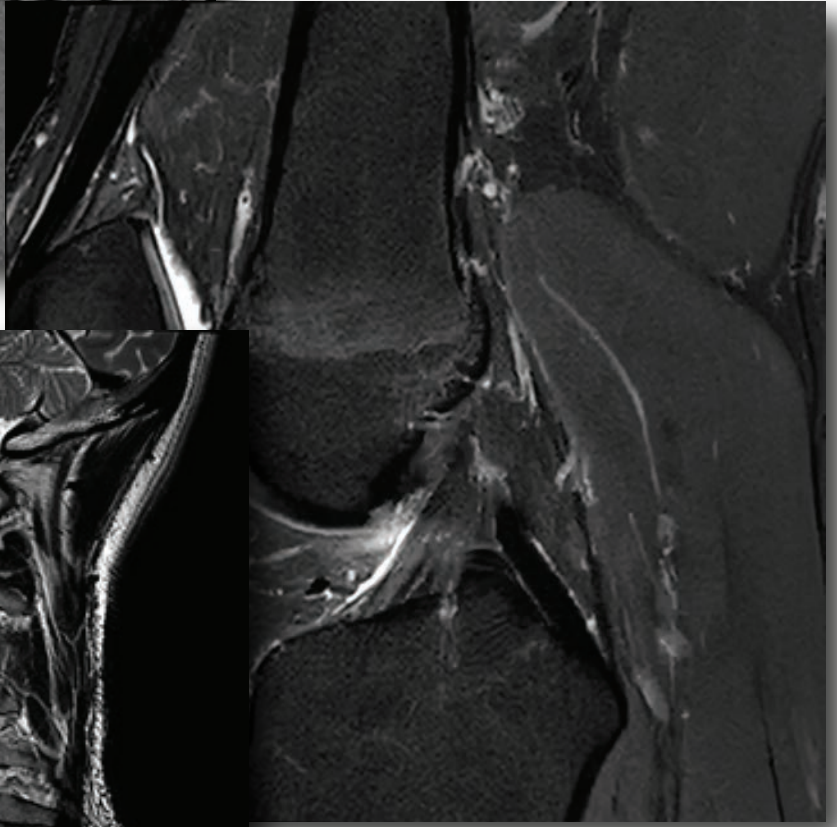
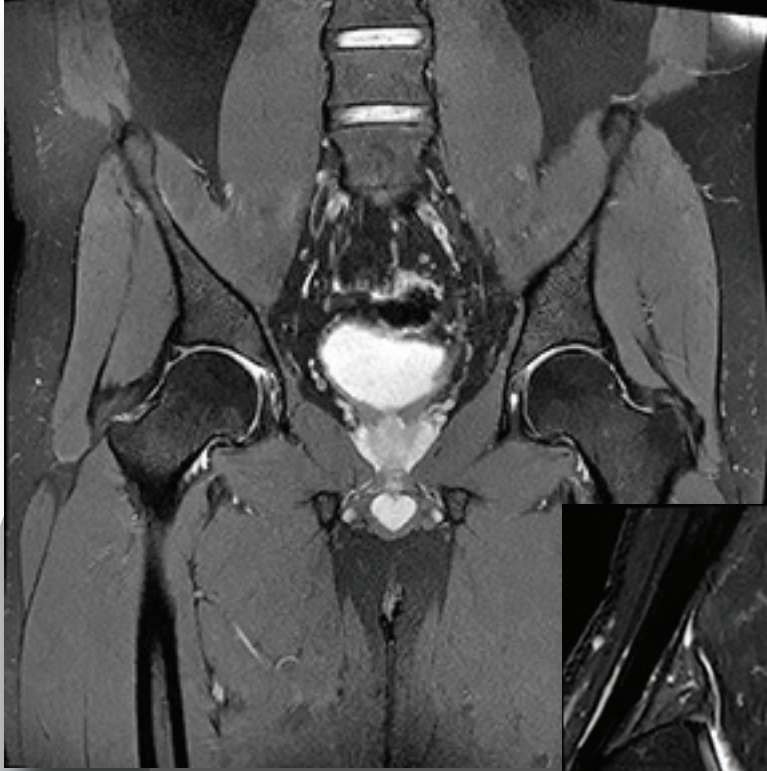
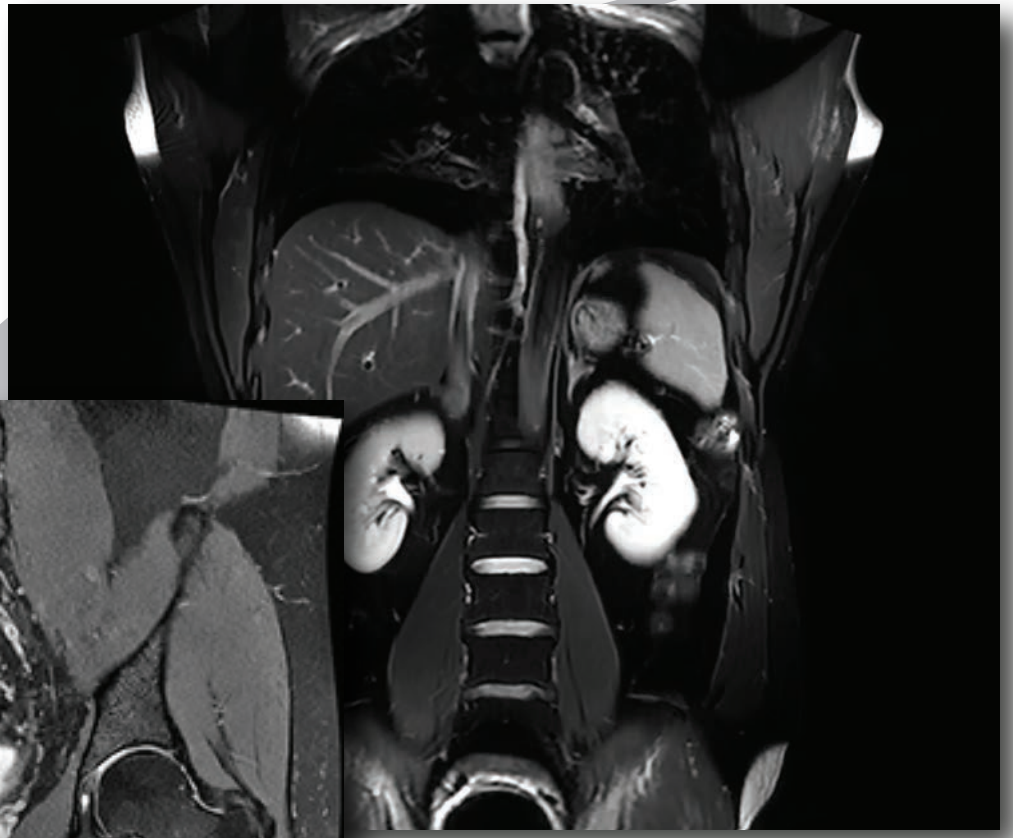


TECHNOLOGY REQUIRED FOR ULTRA-WIDE IMAGING

- Next-Generation GPA with 3.5 MW peak power
- Gradient Performance of 45 mT/m & 200 T/m/s
- 0.029 ppm @ 30 DSV Homogeneity (Typical)



** Under normal conditions





ACCESS.
UNCOMPROMISED.
OMEGA.



**UNITED
IMAGING**



radonmedicalimaging.com