

RADON

MEDICAL IMAGING



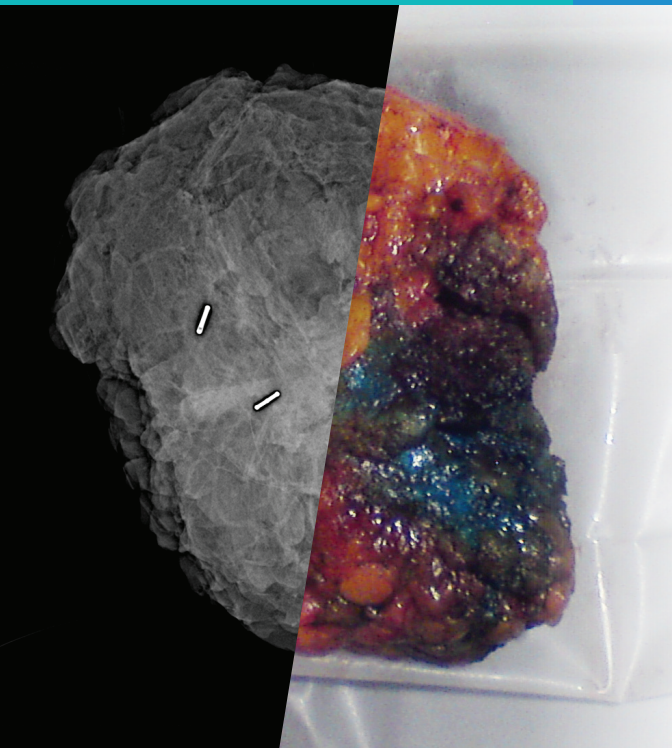
Kubtec Xpert 40

radonmedicalimaging.com

We focus on people, innovative products,
and service excellence

WV Office 866-723-6698

VA Office 800-722-1991



Highest quality Specimen X-ray images.
Integrated HD Optical Camera.
Accurate specimen orientation.

The XPERT® 40 Specimen Radiography System

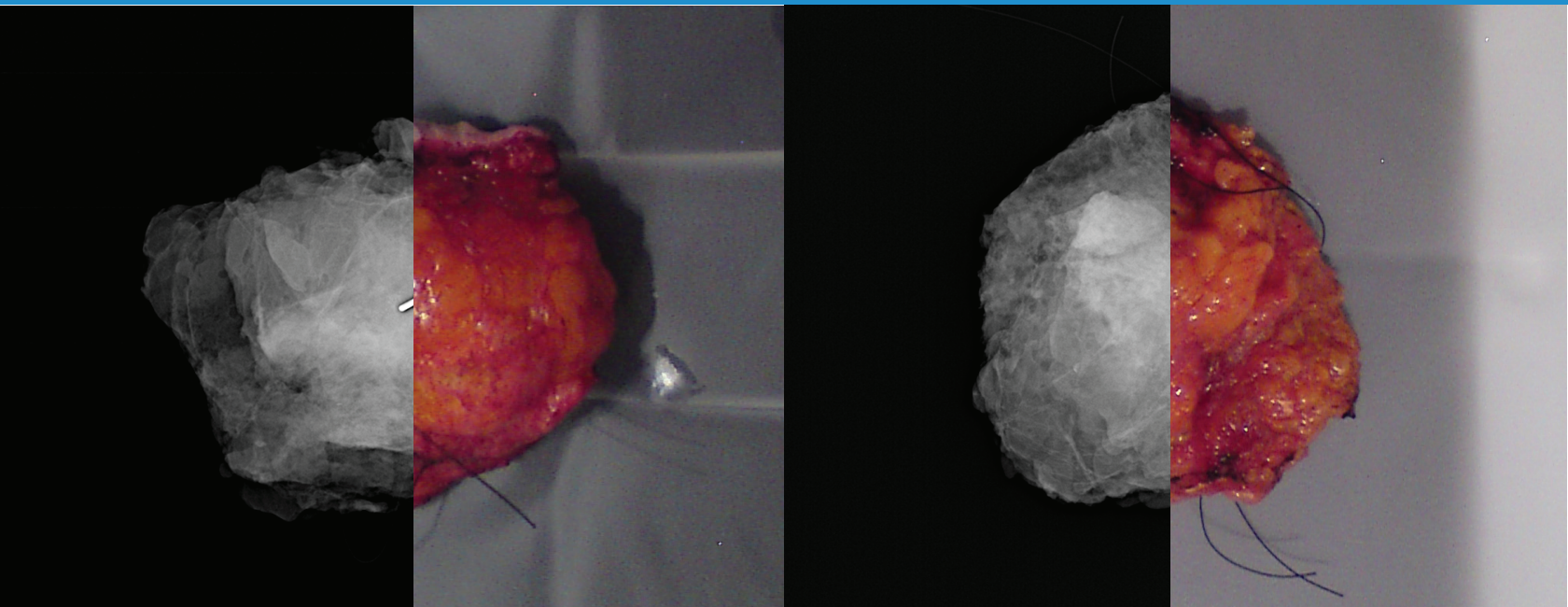
Whether in the biopsy suite,
the pathology lab, or the OR
nothing beats the XPERT® 40
Specimen Radiography System
in terms of versatility and speed.

XPERT® 40 System Capabilities:

- Includes an integrated high resolution optical camera for correlation of gross anatomy with X-ray image.
- Provides unprecedented specimen visualization with digital mammography quality.
- Easy to use, with a touchscreen option and a full suite of annotation tools.
- Mobile design allows easy transport between departments.
- Uses most common specimen containers to reduce cost and preserve specimen integrity for pathology.
- Provides 2.3x magnification for increased visibility to detect the smallest abnormalities.
- Automatic Specimen Alert pro-actively alerts you if a specimen has not been removed from the chamber

The XPERT® 40

Specimen Radiography System



Specifications

Detector Size	5" x 6" (12 cm x 15 cm)
Spatial Resolution	10 lp/mm, contact mode 15 lp/mm, 1.5x mag mode 20 lp/mm, 2x mag mode
Energy Range	10-50 kV
Tube Current	up to 1.0 mA
Window Filtration	0.005" beryllium
Focal Spot	50 µm, nominal
Power	90-250 VAC, 50/60 Hz, 500 VA
Wireless Connectivity	Standard
DICOM Interface	Annotate, Store, Print, and Modality Work List
Size (W x D x H)	23" x 23" x 50" (58 x 58 x 127 cm)
Weight	250 lbs. (136 kg)



KUBTEC
MEDICAL IMAGING

WWW.KUBTEC.COM    

Complies with U.S. FDA, Canadian and European requirements. Specifications subject to change without notice. Kubtec, the Kubtec logo, and XPERT are registered trademarks of KUB Technologies, Inc. M1243D-0918