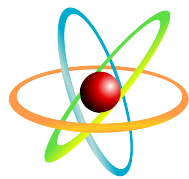


# RADON

## MEDICAL IMAGING



Premier Imaging  
Medical Systems

Premier Imaging - Insight DRF Enhanced

[radonmedicalimaging.com](http://radonmedicalimaging.com)

We focus on people, innovative products,  
and service excellence

WV Office 866-723-6698

VA Office 800-722-1991



# Premier Imaging Medical Systems



**INSIGHT DRF ENHANCED**  
FOR THE PRECISION 500 AND LEGACY

The Only Digital  
Imaging Technology Update  
Dynamic Flat Panel for the GE Precision 500 and Legacy Systems

## ***INSIGHT DRF ENHANCED***

- ★ Windows 10 Platform
- ★ Eliminates the OEM Saturn Windows 95 Computer
- ★ Lower Dose Than OEM
- ★ HIPAA Compliant
- ★ Upgrade Provided to your Proven R and F Room
- ★ Table Side Operators' Controls
- ★ Complete Systems Available



# Insight DRF Enhanced Update for the GE Precision 500 and Legacy RF Rooms

WINDOWS 10 PLATFORM HIPAA COMPLIANT | FDA CLEARED SYSTEM



## INTUITIVE USER INTERFACE | EASY-TO-USE CONTROLS

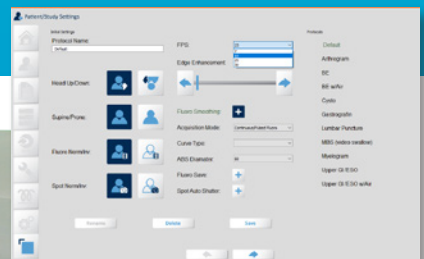
### Image acquisition:

- ★ Fluoroscopy and Pulsed Fluoroscopy Acquisition at 30, 25, 15 and 7.5 Frames Per Second (FPS)
- ★ Fluoroscopy stores up to 30 minutes of fluoroscopy per exam (For MBS and speech therapy patients)
- ★ Support for single or dual monitor operation for “live” and “reference” touchscreen monitors
- ★ Immediate image review with post processing features such as annotations, and region of interest
- ★ Standard image processing features include; invert, zoom/pan, window/level, edge enhancement and variable playback speed controls for multi-frame sequences to optimize patient review
- ★ Patient studies can be printed to any Windows printer or archived to PACS

- ★ DICOM Send /Worklist
- ★ MBS function can record the fluoroscopy of an entire exam
- ★ Increase the imaging performance of your existing fluoroscopy system
- ★ Increased Security with Windows 10
- ★ Improved compliance, fluoroscopy time and dose monitoring built in
- ★ Increased equipment reliability while keeping operating costs low
- ★ 12 months parts and labor warranty
- ★ 3 day installation

### Options:

- ★ Media Write to external drive which may require a new facility HIPAA compliance letter for patients
- ★ Reference Monitor Support



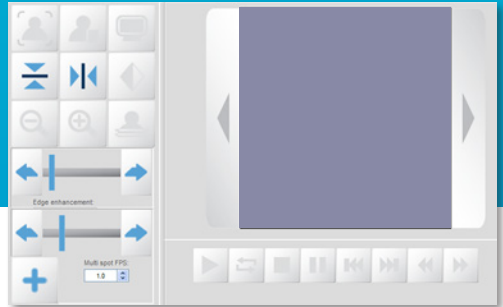
# Proven imaging system with over a decade of installs

UTILIZING PREMIER IMAGING'S INTERFACE IS THE PERFECT TECHNOLOGY REFRESH FOR THE INDUSTRY STANDARD GE PRECISION 500 AND LEGACY SYSTEMS



## INCREASED IMAGE QUALITY | LOWER DOSE THAN OEM

- ★ Windows 10 Support
- ★ Replaces the Saturn/Digital acquisition (Windows 95) computer on the Precision 500
- ★ Spot Exposure Frame Rates  
0.5, 1, 2, 3, 4, 5, 6
- ★ Retrospective save allows for the saving of short fluoroscopy loops during any study
- ★ Our unique Prospective save is designed for MBS studies and can save up to 30 minutes of fluoroscopy and can eliminate the video recorder
- ★ Unique Feature Fluoroscopy Loop Editing
- ★ Flexible and customizable image process settings to match your system and needs
- ★ Unique Table Side Operator controls enhances workflow
- ★ Our CSI Dynamic Detector has a quantum detection efficiency of 56% compared to end of life CCDs in the Precision 500D at 35%
- ★ Low/Medium/High Dose Support
- ★ Elimination of GE DRS cabinet for the Advantx and Legacy
- ★ Optional Dosimetry Kit displays and records exposure dose and fluoroscopy dose rate
- ★ Display & Recording of Air Kerma, Air Kerma Rate, and Fluoroscopy Time
- ★ Auto print to DICOM PACS of dose report per exam



PO Box 188 | Rome, GA 30162 | Office 706-232-4900 | premierims.com  
Sales: Brian @ 706-996-6070 or brian.carlock@premierims.com



- ★ Minimal Downtime for Update
- ★ Huge Improvement in Image Quality
- ★ Fluoroscopy Spot Acquire is 0.5, 1, 2, 3, 4, 5, 6 fps
- ★ MBS Function Capable of Recording the Fluoroscopy of the Entire Exam



### Auto Dose Reporting to PACS

Exam protocol	
Patient name	EMERGENCY-PATIENT
Patient ID	
Date of birth	12/31/69
Sex	
Study description	
Institution name	Institution name
Study date	10/14/19 18:45
Total dose	14.70 [mGy]
Exposure time	0.65 [min]