

# RADON

## MEDICAL IMAGING



## DELWORKS Digital Radiography

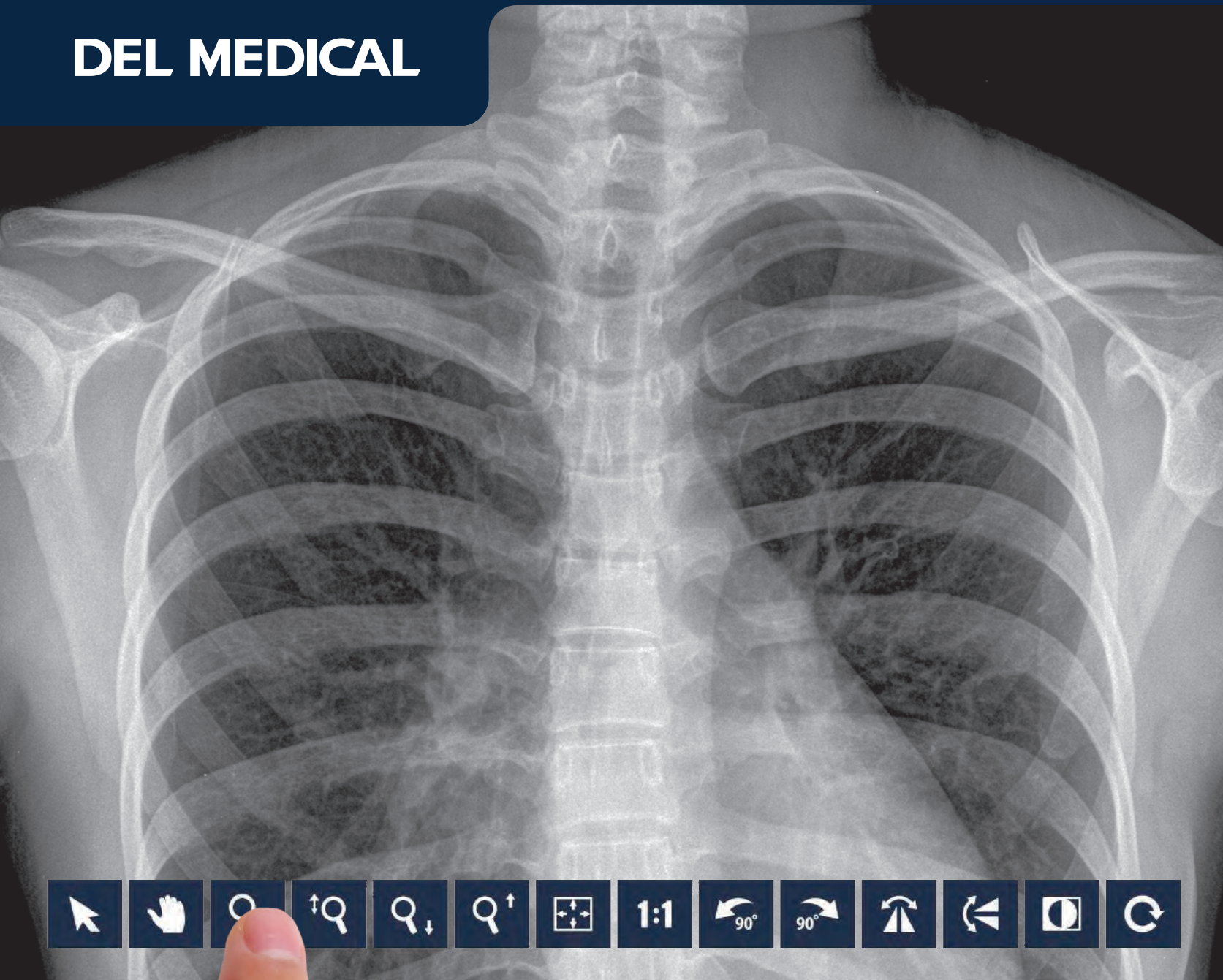
[radonmedicalimaging.com](http://radonmedicalimaging.com)

We focus on people, innovative products,  
and service excellence

WV Office 866-723-6698

VA Office 800-722-1991

**DEL MEDICAL**



**DELWORKS**

*DIGITAL RADIOGRAPHY*

# Product Overview

## A Smart and Complete DR Solution

The DELWORKS DR Upgrade delivers exceptional diagnostic imaging using a powerful image acquisition and processing software, Cesium Iodide (CsI) detector options, and speciality features such as Auto Exposure Detection (AED) technology.

Its interface features a hassle-free, single console workflow designed to simplify every step of the examination procedure. This provides technologists with fast image preview times, advanced image enhancement capabilities and generator control options — all from a large format LED touchscreen display.

### Premium detector options

Our DR upgrade offers lightweight wireless and fixed detector options designed to maximize workflow and minimize patient dose, without compromising image quality.

DELWORKS features the world's lightest cassette-sized detectors which promote incredibly fast positioning and readjustments. With up to 8 hours of battery life and AED technology, technologists can benefit from lasting power in even the most demanding medical facilities.

## Key Highlights



Single Console Workflow and Generator Integration



Cesium Iodide (CsI) Wireless and Fixed Detector Options



EasyConnect (AED) Technology



23" 2MP Touchscreen Color LED Monitor



DICOM Connectivity (store, print, MPPS, MWL)



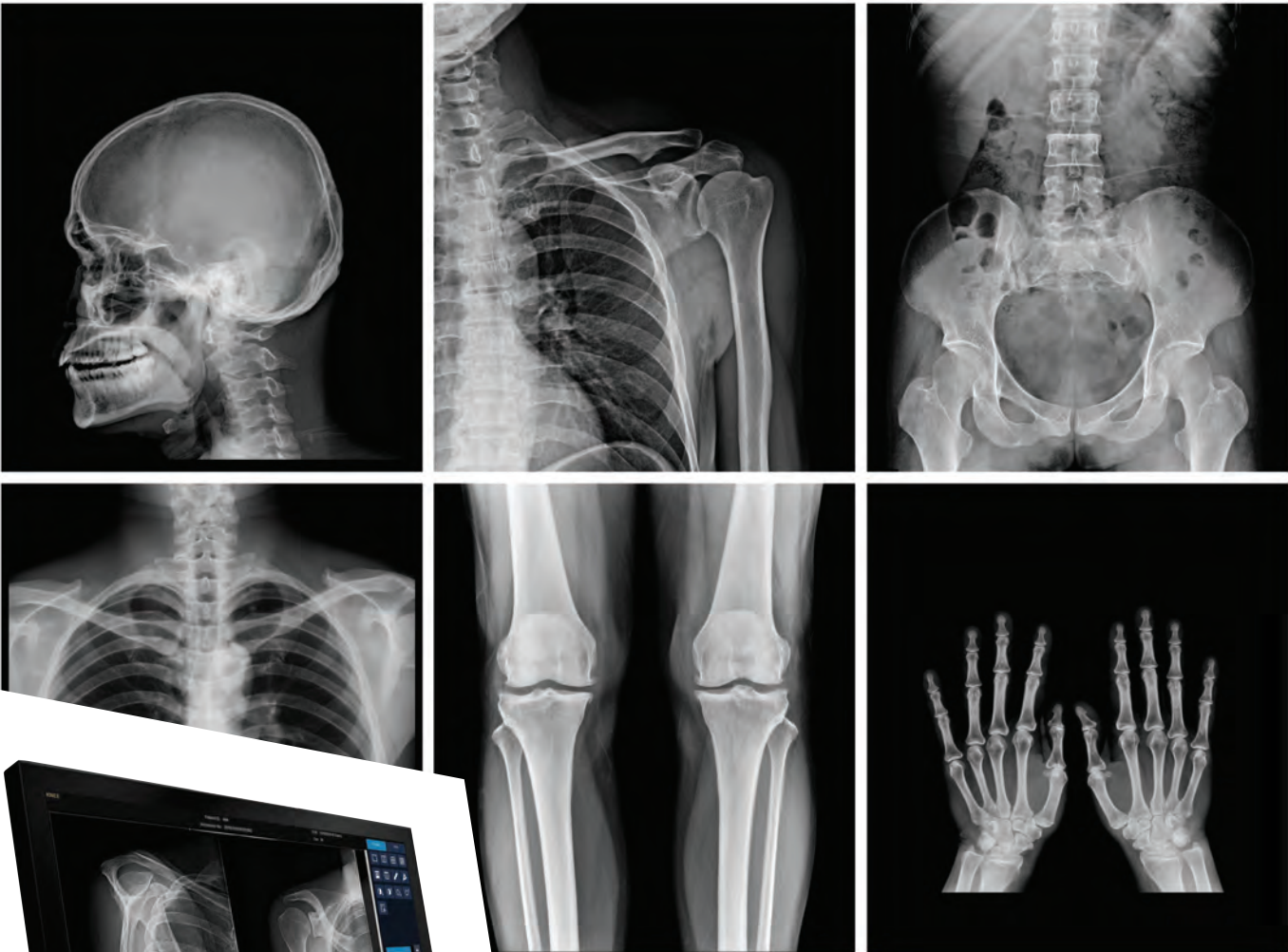
Image Stitching Application (Optional)



DELWORKS FIT Tablet PC Workstation (Optional)



Outstanding Images in Seconds. Easy for Staff. Safe for Patients.



View images on a stunning 23 inch touchscreen LED display that offers wide angle viewing capabilities and the ability to utilize simple hand gestures to navigate through the user interface

# Software and Detector Options

## Outstanding Image Quality and Reduced Patient Dose

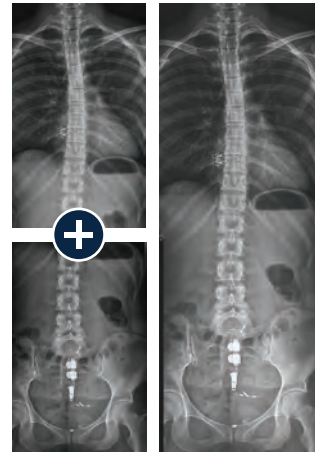
### DELWORKS

DELWORKS is a powerful image acquisition and processing software featuring a user-friendly interface that provides sophisticated and speedy medical imaging. Designed with complex system automation, DELWORKS aims to simplify the examination process by making the difficult decisions for you.

Its advanced anatomical programming and image processing algorithms help optimize technologist productivity. DELWORKS strives to minimize human error and unwanted repeat exams to give technologists the highest quality image and lowest dose, with every exposure.

## Software Features

- ▶ Pre-exposure display of patient and procedure information, X-ray generator exposure factors, status and control functions integrated in a single display screen
- ▶ Exam-specific image processing algorithms automatically optimize images based on selected patient anatomy
- ▶ Enhanced image processing parameters. APR specific default values and manual adjustment, if desired
- ▶ Image rotation in 90° steps, horizontal mirroring, automatic and manual image cropping to collimated area
- ▶ Easy verification and correction of image laterality and patient orientation
- ▶ Intuitively add orientation markers and text comments directly to aquired images (pre-defined or free text)
- ▶ Detailed histograms of pixel density
- ▶ User selection of modified LUT (Look-Up Table) based on various exam types
- ▶ Manual adjustment of the LUT, window and level
- ▶ Effectively manage rejected images



## Image Stitching Upgrade

The optional image stitching application requires no unnecessary preprogramming or additional equipment, making full-length spine studies effortless and accurate.

# Premium Detectors Available in Single, Dual, or Multi-Detector Applications

## E14C Wireless Detector

The E14C is an ultra-light, portable 14 x 17 in. (36 x 43 cm) wireless detector with outstanding image quality, offering the compact versatility needed to optimize workflow. The E14C has an internal accelerometer which automatically senses motion and takes the detector in and out of ready mode, extending its battery life.



## E24C Wireless Detector

The E24C is a compact 24 x 30 cm version of the E14C detector that is ideal for small anatomy and pediatric imaging.



## E14Ce Wireless Detector

The E14Ce is an economical and technology rich wireless 14 x 17 in. detector option with Cesium Iodide.

### EasyConnect

DELWORKS wireless detectors feature EasyConnect — an Auto Exposure Detection (AED) technology that keeps the detector in a standby mode, awaiting exposure from any X-ray source. Once an exposure is detected it instantly captures the X-ray image and transmits it wirelessly to the system workstation.

## E17C Fixed Detector

The E17C fixed, 17 x 17in (43 x 43cm), large format flat-panel detector is designed to minimize technologist interaction with upright exams in a dual or multi-detector configuration. It is easy to integrate in all types of X-ray systems and delivers both quality images and fast exams, for increased productivity.



# Portable Workstation

## Wireless Versatility

### DELWORKS FIT

The DELWORKS FIT Portable Tablet Workstation aims to maximize the portability and efficiency of the DELWORKS software — utilizing it anytime, anywhere.

All of the excellent user-friendly features of the DELWORKS Software are beautifully translated to an able-bodied tablet PC, capable of withstanding even the harshest radiology (or non-radiology) environments. This handheld workstation features wireless connectivity, plenty of storage space, and a powerful Intel® Core™ i5 processor to perform rapid and productive patient side studies, without limitations.

### Tablet Features

- ▶ Can replace outdated CR systems and optimize existing DR configurations
- ▶ Process, review and accept acquired image(s) and wirelessly transfer directly to PACS
- ▶ Full-HD 12.5" Wide Viewing Angle Display
- ▶ Completely rugged with both MIL-STD-810G and IP54 ratings (Tested to handle multiple 4' drops, water, dust and splash resistance)
- ▶ Over 9 hours of battery life
- ▶ Ultra-light, only 2.9 lbs. (1.34kg)



Existing analog mobile and portable x-ray devices, radiographic rooms, and other remote or distant locations can greatly benefit from the enhanced adaptability provided by the DELWORKS FIT

### Charging and Screen Mirroring

When technologists are finished with portable exams, the tablet PC can be placed in its dock for charging and image transfer. Image transfer can also be accomplished wirelessly if suitable to the application.

The dock connection additionally allows for screen mirroring. This feature provides a simplified and streamlined workflow when utilized in combination with a complete radiographic room setting.







# Technical Specifications

## Desktop Workstation

**Operating System:** Windows 7 Pro 64-bit  
**Processor:** 3.0GHz, Intel Core i5  
**Storage/Memory:** 16GB RAM, 1TB HD  
**Cabinet Color:** Black, Gray  
**Panel Type:** Color TFT LCD Panel (IPS)  
**Panel Size:** 58 cm/23"(584 mm diagonal)  
**Display Size:** 509.1 mm x 286.4 mm  
**Pixel Pitch:** 0.270 x 0.270  
**Native Resolution:** 1920 x 1080  
**Color Support:** 16.77 million  
**Viewing Angles:** 178°, 178°  
**Brightness:** 260 cd/m<sup>2</sup>  
**Contrast Ratio:** 1000:1  
**Response Time:** 16 ms (On/Off)  
**Dimensions:** 21.9" x 14.4" x 8.1" with stand  
 (556.3 mm x 365.8 mm x 205.7 mm)  
**Net Weight:** 14.55 lbs-with stand

## Tablet Workstation

**Operating System:** Windows 7 Pro 64-bit  
**Processor:** 2.3GHz, Intel Core i5  
**Storage/Memory:** 8GB RAM, 250GB SSD  
**Display:**  
 - 12.5" Wide Viewing Angle Screen  
 - Full-HD Resolution (1920 x 1080)  
**Keyboard/Input:** Capacitive 10-Point Touch  
**Battery:**  
 - Battery life over 9 hours  
 - Appox. 2.5 hours charge time  
**Dimensions:** 12.93" x 8.17" x .75"  
 (328.5 mm x 207.5 mm x 19 mm)  
**Weight:** 2.9 lbs (1.34 kg)  
**Certifications:**  
 - MIL-STD-810G tested (Multiple 4' Drops)  
 - IP54 (Water, dust and splash resistant)  
**WiFi:** Intel® Dual Band Wireless-AC 8260 Wi-Fi plus  
 Bluetooth® 4.2

## DR Detectors



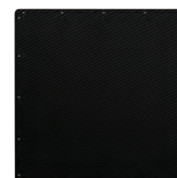
E14Cw



E14Ce



E24Cw



E17C

<b>Detector Size:</b>	14" x 17" (36 x 43 cm)	14" x 17" (36 x 43 cm)	24 x 30 cm	17" x 17" (43 x 43 cm)
<b>Scintillator:</b>	Cesium Iodide (CsI)	Cesium Iodide (CsI)	Cesium Iodide (CsI)	Cesium Iodide (CsI)
<b>Pixel Size:</b>	148 µm	160 µm	148 µm	148 µm
<b>Resolution:</b>	3.5 lp/mm	3.5 lp/mm	3.5 lp/mm	3.5 lp/mm
<b>Pixels:</b>	2400 x 2880 pixels	2400 x 2880 pixels	1560 x 1920 pixels	2880 x 2880 pixels
<b>Active Area:</b>	13.8" x 16.8"	13.8" x 16.8"	8.7" x 11.2"	16.9" x 16.9"
<b>Image Depth:</b>	16 bit A/D	16 bit A/D	16 bit A/D	16 bit A/D
<b>Image Display:</b>	3-6 sec.	<6 sec.	3-6 sec.	4 sec.
<b>Cycle Time:</b>	9 seconds	9 seconds	9 seconds	6 seconds
<b>Dimensions:</b>	15" x 18" x 0.6"	15" x 18" x 0.6"	27 x 33 x 1.55 cm	19.7" x 19.3" x 1.7"
<b>Weight:</b>	6.17 lbs. w/battery	6.8 lbs. w/battery	3.5 lbs. w/battery	27.5 lbs.
<b>Auto Exposure Detection:</b>	Yes	Yes	Yes	No

