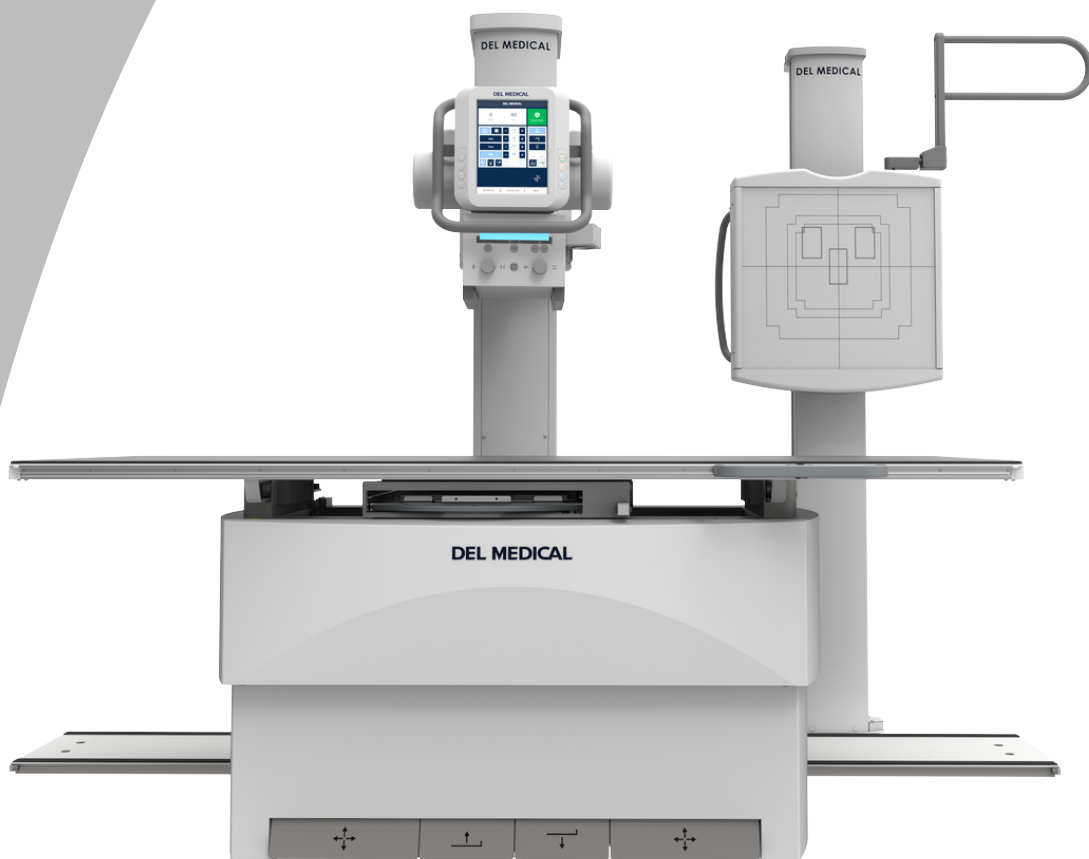


# RADON

## MEDICAL IMAGING



Del Medical FMT18M

[radonmedicalimaging.com](http://radonmedicalimaging.com)

We focus on people, innovative products,  
and service excellence

WV Office 866-723-6698

VA Office 800-722-1991

**DEL MEDICAL**

# FMT18<sup>M</sup>

FLOOR MOUNTED SYSTEM



# System Overview

## Clinical Efficiency

The FMT18M System was designed with features proven to optimize workflow, patient care and technologist productivity. This floor mounted configuration is ideal for imaging environments requiring high-volume throughput, such as hospital radiology departments and medical imaging centers.

Its tube stand features a sophisticated LCD touchscreen console, which supports enhanced capabilities to offer a more genuine patient experience. By integrating with a DELWORKS DR System and compatible generator, technologists are given the ability to adjust generator technique factors without leaving the patient's side.

The system embraces operational efficiency through its touchscreen console, ergonomically designed user controls, and an industry leading patient weight capacity of up to 800 lbs. The FMT18M System was developed through innovation to produce the highest quality diagnostic images with ease. Built in the USA, it is prepared to deliver many years of continuous use and exceptional user-satisfaction.

## System Includes

- ▶ Floor Mounted Tube Stand with Manual Collimator (Vertical Tracking Version Available)
- ▶ EV800 Four-Way Elevating Float Top Table
- ▶ VS300 Wall Stand
- ▶ High Frequency Generator
- ▶ DELWORKS DR System

## Key Highlights



Technologist-Friendly  
LCD Touchscreen



Electromagnetic  
Braking



Premium Table  
and Wall Stand



Integrated Workflow



Fixed and Wireless  
DR Detector Options



Dose Management  
Configurations



# System Features

## Intuitive Control and Flexible Positioning

The FMT18M floor mounted tube stand highlights an advanced, 10.4" technologist-friendly touchscreen console that provides seamless operation of your radiographic system by displaying tube angulation, SID values, and customizable generator controls. This tube stand only requires a minimum ceiling height of 87", making it a perfect solution for low ceiling installations. Peaceful and effortless movements are controlled by an electromagnetic braking system enabling fast and secure readjustments of the tube head. Its extensive vertical and longitudinal travel range permits easy and complete head-to-toe radiographic procedures including upright weight bearing and recumbent table top exams.



### Easy to Use

A conveniently placed all-lock release sensor is located just above the bottom section of the tube head handle. This sensor enables rapid manual positioning by allowing the user to simply grab the bottom handle to unlock the system and make swift adjustments.



### Auto-Collimation

Accelerates patient positioning and reduces radiation exposure by automatically selecting the proper field-of-view for each body part. This feature is available through the DelWorks DR acquisition software's pre-programmed APR settings.

## Powerful Integration

The FMT18M System is powered by a compact and robust CM Series generator, available in 32, 40, 50, 65 and 80 kW models. The generator is fully integrated with the DelWorks DR Workstation creating a streamlined workflow and enhancing dose efficiency.



23" Touchscreen Monitor



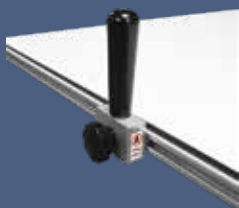
# Designed for performance, built for longevity

## Elevating Four-way Float Top Table

The durable EV800 elevating four-way float top table delivers outstanding safety and usability. Featuring an exclusive four-point lift system and exceptionally quiet motor-drive, its smooth, scratch resistant table top lowers to a height of just 22" to ensure stress-free patient transfers and adjustments. Offering a high patient weight capacity of up to 800lbs (363 kg), stable continuous movement is possible through conveniently placed recessed foot treadles and table-side controls, suitable for increasing technologist performance and satisfaction.



## Accessories and Upgrades



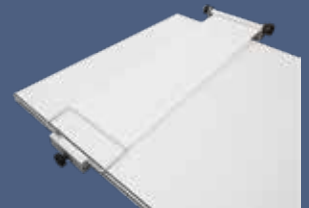
### ▶ Table Side Handgrips

These sturdy handgrips can be mounted along the entire length of both sides of the table top to enhance patient safety.



### ▶ Lateral Cassette Holder

This adjustable holder can be mounted along both sides of the table top allowing for access to a variety of cross-table lateral views.



### ▶ Compression Band

This compression device is used to safely secure patients to the table top.



## Ergonomic Wall Stand

The reliable VS300 wall stand utilizes electromagnetic 'fail safe' locks to maintain operator confidence throughout the imaging procedure. Full receptor movement to the floor, patient-side handgrips and optional overhead handgrips promote efficient upright exams without placing unnecessary strain on the patient.

Designed for convenience, the VS300 technologist handgrip permits relaxed vertical travel by angling with the operator's wrist as the image receptor is raised or lowered.



## Rotating Tray \* optional upgrade

The easy-to-use rotating tray enables manual rotation of the DR detector for use inside both table and wall stand. Stable one-handed operation supports fast portrait-to-landscape positioning without ever removing the detector from the tray. Fully extended steel slides activate locking mechanisms to assure detector protection when loading and unloading. Designed to accommodate a wide array of ISO 14 x 17" cassette-sized detectors.





# DR Features

## High Quality Images, Reduced Patient Dose

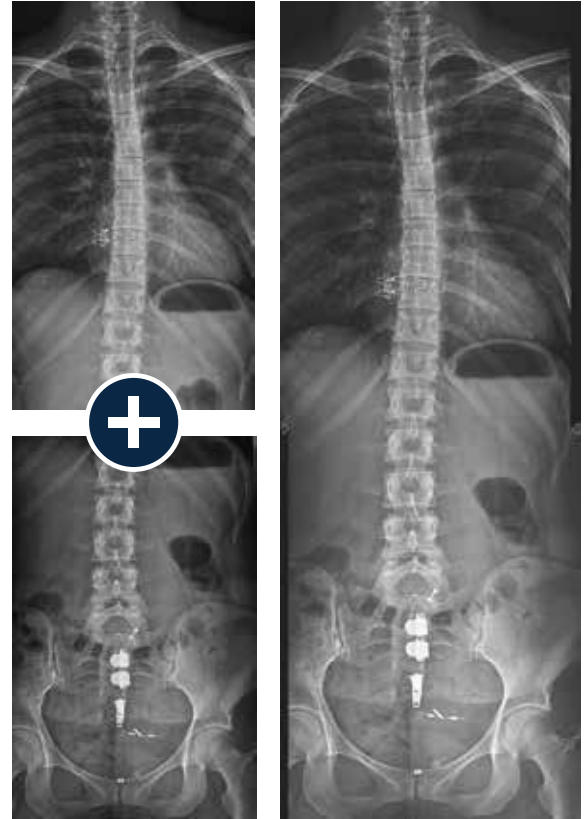
### DELWORKS

DELWORKS is a powerful image acquisition and processing software featuring a user-friendly interface that provides sophisticated and speedy medical imaging. Designed with complex system automation, DELWORKS aims to simplify the examination process by making the difficult decisions for you.

Its advanced anatomical programming and image processing algorithms help optimize technologist productivity. DELWORKS strives to minimize human error and unwanted repeat exams to give technologists the highest quality image at a lower dose, with every exposure.

### Software Features

- ▶ Pre-exposure display of patient and procedure information, X-ray generator exposure factors, status and control functions integrated in a single display screen
- ▶ Exam-specific image processing algorithms automatically optimize images based on selected patient anatomy
- ▶ Enhanced image processing parameters. APR specific default values and manual adjustment, if desired
- ▶ Image rotation in 90° steps, horizontal mirroring, automatic and manual image cropping to collimated area
- ▶ Easy verification and correction of image laterality and patient orientation



### Image Stitching

The optional image stitching application requires no unnecessary preprogramming or additional equipment, making full-length spine studies effortless and accurate.

- ▶ Intuitively add orientation markers and text comments directly to aquired images (pre-defined or free text)
- ▶ Detailed histograms of pixel density
- ▶ User selection of modified LUT (Look-Up Table) based on various exam types
- ▶ Manual adjustment of the LUT, window and level
- ▶ Effectively manage rejected images

# Premium Detectors Available in Single, Dual, or Multi-Detector Applications

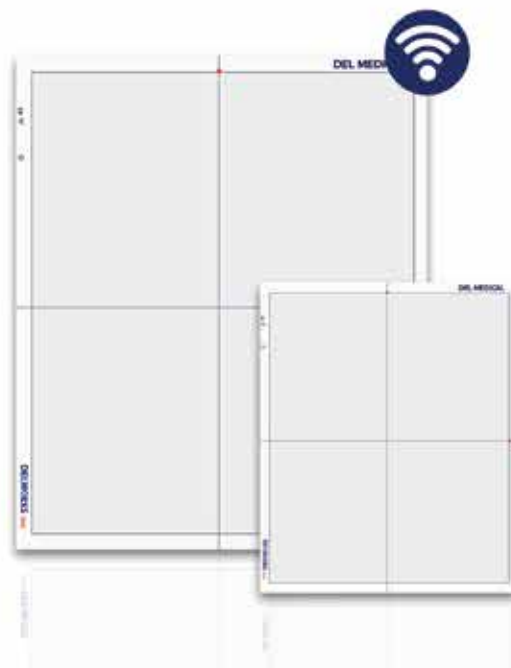
## Wireless

### E14C

The E14C is an ultra-light, portable 14in x 17in (36cm x 43cm) wireless detector with outstanding image quality, offering the compact versatility needed to optimize workflow. The E14C has an internal accelerometer which automatically senses motion and takes the detector in and out of ready mode, extending its battery life.

### E24C

The E24C is a compact 24cm x 30cm version of the E14C detector that is ideal for small anatomy and pediatric imaging.



## EasyConnect

DELWORKS E-Series Wireless Detectors feature EasyConnect — an Auto Exposure Detection (AED) technology that keeps the detector in a standby mode, awaiting exposure from any X-ray source. Once an exposure is detected, it instantly captures the X-ray image and transmits it wirelessly to the system workstation.

## Fixed

### E17C

The E17C fixed, 17in x 17in (43cm x 43cm), large format flat-panel detector is designed to minimize technologist interaction with upright exams in a dual or multi-detector configuration. It is easy to integrate in all types of X-ray systems and delivers both quality images and fast exams, for increased productivity.



# Technical Specifications

\* All specifications subject to change without notice

## FMT18M Tube Stand

Ceiling height:	Minimum 87" (221 cm)
Column height:	85.5" (217 cm)
Vertical travel:	64.5" (164 cm) total
Floor to focal spot (with standard platform mount):	Minimum 11" (28 cm), Maximum 75.5" (192 cm)
Longitudinal travel:	94" (239 cm)
Rail longitudinal length:	120" (305 cm)
Transverse travel:	11" (28 cm)
Tube, collimator, and cable support capacity:	88 lbs. (40 kg)
Platform assembly weight:	125 lbs. (57 kg) net
Column rotation:	180° where installation permits
Tube rotation:	±180° detents for lateral decubitus projections
Base assembly to rear wall:	8" (20.5 cm)
Power requirements:	24V

## EV800 Radiographic Table

Patient load capacity:	800 lbs. (363 kg)
Table base length:	53" (135 cm)
Table base width:	25" (64 cm)
Table top movement:	Longitudinal, ± 21.25" (54 cm) Transverse, ± 4.5" (11.4 cm)
Variable height:	22.25" (56.5 cm) to 34.25" (87 cm)
Bucky travel:	± 8.5" (22 cm)
Table top length:	86.5" (220 cm)
Table top width:	36" (91 cm)
Weight:	563 lbs. (256 kg)
Power requirements:	120 VAC or 230/240 VAC
Options:	78" (198 cm) table top length / 32" (81 cm) table top width / Lateral cassette holder / Table-side patient handgrips / Rotating cassette tray

## VS300 Wall Stand

Height:	84" (213.4 cm)
Depth:	13.4" (34 cm)
Receptor width:	24.6" (62.5 cm)
Receptor height:	26.5" (67.3 cm)
Weight (with receptor):	200 lbs. (91 kg)
Power requirements:	24 VDC, 1.25 max. momentary amps
Options:	Floor mount kit for freestanding version / Wall mount bracket extension kit / Rotating cassette tray

