

# RADON

## MEDICAL IMAGING



### Canon Digital Radiography Tablet Solution

[radonmedicalimaging.com](http://radonmedicalimaging.com)

We focus on people, innovative products,  
and service excellence

WV Office 866-723-6698

VA Office 800-722-1991

# Canon

## *DR Tablet Solution*

Tablet | Detector | Software



*Shown with optional Docking Station, sold separately.*

# Make the Move to Digital Radiography



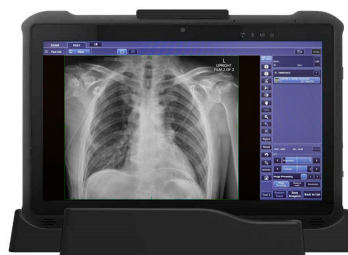
## The Brilliantly Simple DR Tablet Solution

The Solution consists of a tablet PC\* and choice of a wireless CXDI Digital Radiography (DR) System, which includes CXDI Control Software NE. The auto-detection mode of the detector allows for X-rays to be automatically detected at exposure without the use of a typical generator interface. Connect the CXDI Wireless Digital Radiography System in 2.4GHz or 5GHz and choose your channel.

*\*Manufactured by a third party.*

### Tablet Highlights:

- 11.6 inch projected capacitive multi-touch display with LED backlight and attached stylus
- Intel® Core™ i5-7300U 2.60GHz processor (Kaby Lake)
- Integrated 2D barcode reader
- Hand and shoulder straps (included) allow for easy, safe handling on the go



*Shown with included desktop dock*



*Shown with included shoulder strap*

### The DR Tablet Solution is available with a choice of these CXDI Wireless Detectors:

#### Canon CXDI-710C/810C/410C Wireless Detectors



**CXDI-710C**  
Wireless Digital Detector

- 14x17 in effective image area
- Weighs 5.07 lbs w/ battery



**CXDI-810C**  
Wireless Digital Detector

- 11x14 in effective image area
- Weighs 3.97 lbs w/ battery



**CXDI-410C**  
Wireless Digital Detector

- 17x17 in effective image area
- Weighs 6.17 lbs w/battery

#### Canon CXDI-702C/402C Wireless Detectors



**CXDI-702C**  
Wireless Digital Detector

- 14x17 in effective image area
- Weighs 6.83 lbs. w/ battery



**CXDI-402C**  
Wireless Digital Detector

- 17x17 in effective image area
- Weighs 8.16 lbs. w/ battery

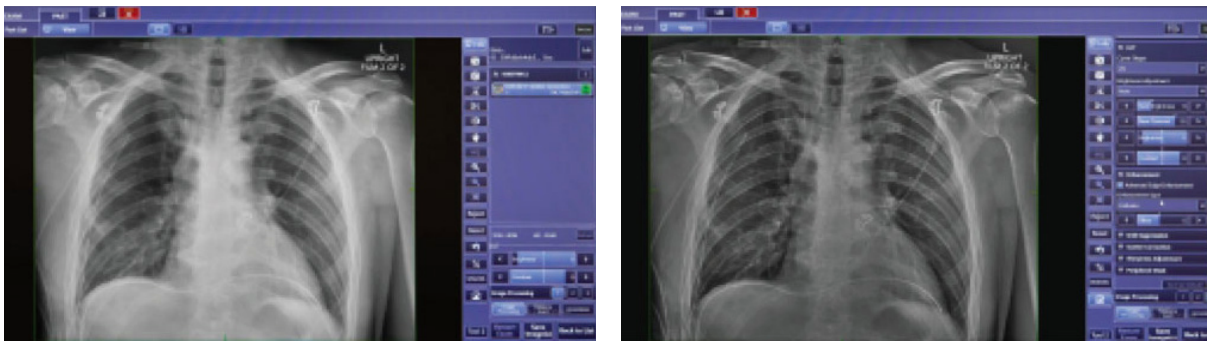


## CXDI Control Software NE

Move to DR with the flexible tablet solution that includes all the robust functionality of exclusive Canon CXDI Control Software NE

### Advanced Edge Enhancement

Heightened image processing algorithm functionality providing a wide range of settings and effect levels.



### Stitching

Normally an industry add-on, stitching comes standard with the CXDI Control Software NE. Stitching allows up to four images to be combined into one image to assist with diagnosis (e.g. spine, legs, etc.).

### Scatter Correction

The optional Scatter Correction Feature of CXDI Control Software NE is designed to help radiology staff work efficiently without the need to use an anti-scatter grid during certain types of X-ray examinations.

*All images are simulated.*

## Tablet Specifications

Operating System	Windows® 10 Professional 64-bit	
CPU	Intel® Core™ i5-7300 2.5GHz	
Memory	8GB DDR4 SDRAM	
Storage	256 GB SSD	
Display	<ul style="list-style-type: none"> <li>• 11.6-inch display with LED Backlight</li> <li>• Projected capacitive multi-touch</li> <li>• 1920 x 1080 Full HD</li> <li>• 850 nits with direct optical bonding</li> </ul>	
Graphic	Intel® HD Graphics 620	
RF	802.11 a/b/g/n/ac WiFi Bluetooth 5.0	
Data Collection	2D barcode reader	
Sensor	Light sensor / g-sensor / Gyro / E-compass	
Power Management	<ul style="list-style-type: none"> <li>• Power Input: 19V DC</li> <li>• AC Adapter: 100-240V, 50-60Hz (19V DC)</li> </ul>	
Battery	<ul style="list-style-type: none"> <li>• Hot-swappable 7.7V typ. 5900 mAh Li-Polymer Battery (2S1P)</li> <li>• Optional 7.4V typ. 10280 mAh Li-Polymer Battery (2S2P)</li> </ul> Battery Operating Time: Std. Battery: 8 hours	
Dimensions and Weight	Dimensions (W x L x H) 300.67 x 201.97 x 22.5 mm 1.4 kg (3.08 lbs)	
LED Indicator	Power, Battery, HDD, RF	
Additional Features	IP65, MIL-STD-810G, shock & vibration, 4 feet drop	
Environment	<ul style="list-style-type: none"> <li>• Operating Temperature -20°C to 60°C (AC mode), -10°C to 50°C (Battery mode)</li> <li>• Storage Temperature -30°C to 70°C</li> <li>• Operating Humidity 10% to 90% RH, non-condensing</li> <li>• Shock MIL-STD-810G Method 516.6 Procedure I</li> <li>• Vibration MIL-STD-810G Method 514.6 Procedure I</li> <li>• Drop MIL-STD-810G Method 516.6, 4 ft</li> <li>• IP Rating IP65 certified, dustproof and waterproof</li> </ul>	
Security	Trusted Platform Module (TPM) 2.0	
Accessories	INCLUDED: <ul style="list-style-type: none"> <li>• Stylus</li> <li>• Hand strap</li> <li>• Shoulder strap</li> <li>• Power adapter</li> <li>• Desktop dock</li> </ul>	OPTIONAL: <ul style="list-style-type: none"> <li>• Dual-bay battery charger</li> <li>• Additional battery</li> <li>• Additional desktop dock</li> </ul>

Follow us: <https://us.medical.canon>



@CanonMedicalUS



Canon Medical Systems USA, Inc.



+CanonMedicalUS

**CANON MEDICAL SYSTEMS USA, INC.**

<https://us.medical.canon> | 2441 Michelle Drive, Tustin CA 92780 | 800.421.1968

©Canon Medical Systems, USA 2021. All rights reserved. Design and specifications are subject to change without notice. Made for Life is a trademark of Canon Medical Systems Corporation. YouTube logo is a trademark of Google Inc. TWITTER, TWEET, RETWEET and the Twitter logo are trademarks of Twitter, Inc. or its affiliates. LinkedIn, the LinkedIn logo, the IN logo and InMail are registered trademarks or trademarks of LinkedIn Corporation and its affiliates in the United States and/or other countries.

XRCSS13753US

*Made For life*